

Location: Hospital Line

Aerial Inspection Report

Prepared by: CPI

Report date: September 3, 2022

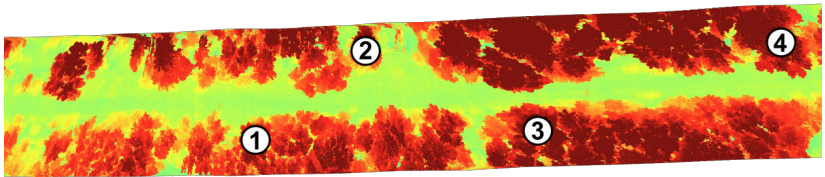


CONSUMERS POWER INC.



Hospital Line

Annotations 1 through 4



Priority: **High**

Condition: **Tree Clearance**

Date: **September 2, 2022, 15:08**

GPS Coordinates: **44.616847 -123.254771**

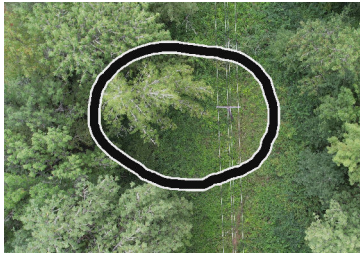
Notes: **Tree encroachment**



Hospital Line

Annotation 1 of 4

Aug. 2, 2022



Aug. 22, 2022

